

Keyboard Shortcuts

Legal Notices

Published by Toon Boom Animation Inc.

Corporate Headquarters
7 Laurier Avenue East
Montreal, Quebec
Canada H2T 1E4
Tel: (514) 278-8666
Fax: (514) 278-2666
www.toonboom.com

Disclaimer

The content of this manual is covered by a specific limited warranty and exclusions and limit of liability under the applicable License Agreement as supplemented by the special terms and conditions for Adobe® Flash® File Format (SWF). Please refer to the License Agreement and to those special terms and conditions for details.

The content of this manual is the property of Toon Boom Animation Inc. and is copyrighted. Any reproduction in whole or in part is strictly prohibited. For additional copies of this manual, please contact Toon Boom Animation Inc. at the Corporate Headquarters address.
Copyright © 2008 by Toon Boom Animation Inc. All rights reserved.

Trademarks

Toon Boom Pencil Check Pro is a trademark owned by Toon Boom Animation Inc. All other trademarks are the property of their respective owners.

Credits

Documentation Development: Peter Cawthorne
Content Development and Art: Tania Gray, Marie Eve Chartrand, Anouk Whissell

Publication Date

April 2008

Contents

Keyboard Shortcuts	2
Global Commands	3
Drawing	5
Model View	7
XSheet View	7

Keyboard Shortcuts

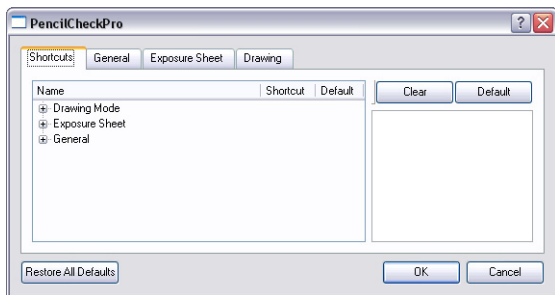
This document lists Toon Boom Pencil Check Pro's default keyboard shortcuts.

In this listing, each key in a sequence is inside square brackets as in, [Ctrl]+[A]. The brackets separate the key from the "+" sign, neither are part of the sequence.

To use a shortcut, press the key and the character simultaneously.

To modify a shortcut:

1. Select **Edit > Preferences** (Windows) or **Pencil Check Pro > Preferences** (Mac OS X) to open the Preferences dialog box.



2. Go to the Shortcuts tab.
3. Select the type of command from the Category drop-down list.
4. Select the specific command from the Commands list.
 - ▶ To create a custom shortcut, click the shortcut, and type a new shortcut path.
 - ▶ To restore a shortcut to its original keyboard combination, press the **Default Value** button.
 - ▶ To remove the current shortcut, press the **Clear** button.
5. Click OK to save your changes.

If you want to restore all shortcuts to their original keyboard combinations, click the **Restore All Defaults** button and click OK.

Note: The following abbreviations are used throughout this document:

- MMB: Middle-Mouse Button
- LMB: Left-Mouse Button
- RMB: Right-Mouse Button

Global Commands

Command	Windows	Mac OS X
Edit		
Copy	[Ctrl]+[C]	[Command]+[C]
Cut	[Ctrl]+[X]	[Command]+[X]
Delete	[Delete]	[Delete]
Deselect All	[Esc]	[Esc]
Paste	[Ctrl]+[V]	[Command]+[V]
Redo	[Ctrl]+[Shift]+[Z]	[Command]+[Shift]+[Z]
Select All	[Ctrl]+[A]	[Command]+[A]
Undo	[Ctrl]+[Z]	[Command]+[Z]
Consecutive Selections	[Shift] + click	[Shift] + click
Multiple Selections	[Ctrl] + click	[Command] + click
File		
Capture	[S]	[S]
New	[Ctrl]+[N]	[Command]+[N]
Open	[Ctrl]+[O]	[Command]+[O]
Export Images	[Ctrl]+[Shift]+[Y]	[Command]+[Shift]+[Y]
Save	[Ctrl]+[S]	[Command]+[S]
Help		
Help	[F1]	[F1]
Playback Controls		
First Frame	[Shift]+[,] comma	[Shift]+[,] comma
Last Frame	[Shift]+[.] period	[Shift]+[.] period
Next Column	[J]	[J]
Next Drawing	[G]	[G]
Next Frame	[.] period	[.] period
Previous Column	[H]	[H]
Previous Drawing	[F]	[F]
Previous Frame	[,] comma	[,] comma
Playback Scene	[Shift]+[Enter]	[Shift]+[Enter]
Stop Playback	[Shift]+[Enter]	[Shift]+[Enter]
View		
Grabber	[Spacebar]	[Spacebar]

Global Commands

Command	Windows	Mac OS X
Recenter on Mouse	[N]	[N]
Reset Angle	[Shift]+[X]	[Shift]+[X]
Reset Pan	[Shift]+[N]	[Shift]+[N]
Reset View	[Shift]+[M]	[Shift]+[M]
Reset Zoom	[Shift]+[Z]	[Shift]+[Z]
Zoom In	[2] [Spacebar]+[MMB]+ drag down	[2]
Zoom Out	[1] [Spacebar]+[MMB]+ drag up	[1]
Workspace		
Toggle Full Screen	[Ctrl] + [F]	[Command]+[F]

Drawing

Command	Windows	Mac OS X
Clean Up		
Close Gaps	[Shift]+[F10]	
Remove Dirt	[Shift]+[D]	[Shift]+[D]
Options		
Apply Tool to All Visible Layers	[Alt]+[A]	[Alt]+[A]
Auto Create Colour Art from Brush	[Shift]+[F2]	[Shift]+[F2]
Selected		
Create Colour Art from Line Art	[*]	[*]
Flip Horizontal	[4]	[4]
Flip Vertical	[5]	[5]
Nudge Large Steps	Arrows + [Shift]	Arrows + [Shift]
Nudge Small Steps	Arrows	Arrows
Selection Tools		
Select	[Alt]+[S]	[Alt]+[S]
Toggle marquee and lasso selection tool (Contour Editor, Perspective Tool and Select Tool only)	[Alt]	[Alt]
Select: Copy	[Ctrl] + drag	[Command] + drag
Select: Delete all outside selection	[Shift]+[Del]	[Shift]+[Del]
Select: Add to selection	[Shift]	[Shift]
Switch to Select Tool (all Drawing Tools)	[Ctrl]	[Alt]
Drawing Tools		
Brush	[Alt]+[B]	[Alt]+[B]
Brush: Change Maximum Size	[O] + drag	[O] + drag
Brush: Change Minimum Size	[Shift]+[O] + drag	[Shift]+[O] + drag
Brush: Connect stroke	[Ctrl]	[Command]
Brush: Straight Line	[Shift] + drag	[Shift] + drag
Brush: Draw from last click	[Alt]	[Alt]
Eraser	[Alt]+[E]	[Ctrl]+[E]
Eraser: Change Maximum Size	[O] + drag	[O] + drag
Eraser: Change Minimum Size	[Shift]+[O] + drag	[Shift]+[O] + drag

Drawing

Command	Windows	Mac OS X
Painting Tools		
Close Gap	[Alt]+[C]	[Alt]+[C]
Close Gap: Use line end, not closest point, to close gap	[Shift]	[Shift]
Dropper	[Alt]+[D]	[Alt]+[D]
Paint	[Alt]+[I]	[Ctrl]+[I]
Paint Unpainted	[Alt]+[Y]	[Alt]+[Y]
Stroke	[Alt]+[V]	[Alt]+[V]
Stroke: Connect stroke	[Alt]	[Alt]
Stroke: Force straight line	[Shift]	[Shift]
Unpaint	[Alt]+[U]	[Ctrl]+[U]
Unpaint: Unpaint all except the clicked zone	[Shift]	[Shift]
Toggle marquee and lasso selection tool (Paint, Paint Unpainted and Unpaint)	[Alt]	[Alt]
Zoom Tool		
Zoom	[Alt]+[Z]	[Alt]+[Z]
Zoom: Zoom out	[Alt]	[Alt]
View		
Backlight	[A]	[A]
Light Table	[Shift]+[L]	[Shift]+[L]
Onion Skin: Next Drawings	[Ctrl]+[`] [Ctrl]+[1] [Ctrl]+[2] [Ctrl]+[3]	[Ctrl]+[`] [Command]+[1] [Command]+[2] [Command]+[3]
Onion Skin: Previous Drawings	[~] [!] [@] [#]	[~] [!] [@] [#]
Preview Line and Colour Art	[P]	[P]
Rotary Table	[Ctrl]+[Alt] +click	[Command]+[Alt] +click
Show Grid	[Ctrl]+[']	[Command]+[']
Show Onion Skin	[Alt]+[O]	[Alt]+[O]
Show Strokes	[K]	[K]

Drawing

Command	Windows	Mac OS X
Switch to Colour Art/ Line Art	[L]	[L]

Model View

Command	Windows	Mac OS X
Unload	[Delete]	[Delete]
Dropper	[Alt]+[D]	[Alt]+[D]
Zoom	[Alt]+[Z]	[Alt]+[Z]
Next Model	[G]	[G]
Previous Model	[F]	[F]

XSheet View

Command	Windows	Mac OS X
---------	---------	----------

Columns

Add Column	[Shift]+[C]	[Shift]+[C]
------------	-------------	-------------

Edit

Insert/Overwrite Mode	[Insert] or [I]	[I]
-----------------------	-----------------	-----

Exposure

Clear Exposure and Pull	[Z]	[Z]
Decrease Exposure	[-]	[-]
Fill Selection	[Ctrl]+[T]	[Command]+[T]
Insert Blank Cell	[X]	[X]
Increase Exposure	[+]	[+]
Sequence Fill	[Ctrl]+[M]	[Command]+[M]

Frames

Add Frames After Selection	[Ctrl]+[H]	[Ctrl]+[H]
Add Frames Before Selection	[Ctrl]+[G]	[Command]+[G]